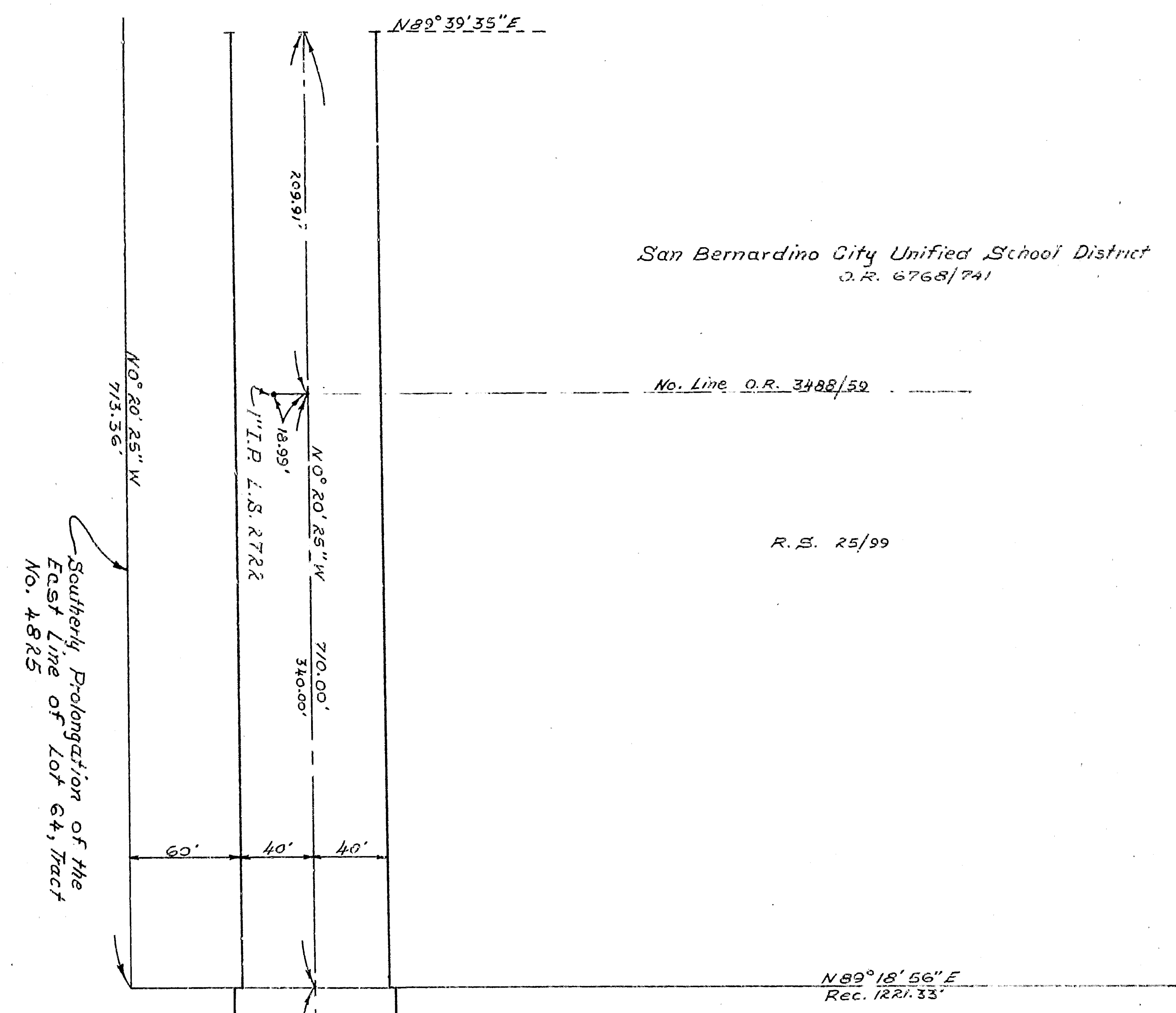


SEE SHEET NO. 7



San Bernardino City Unified School District
D.S. 6768/741

No. Line O.R. 3982/59

R.S. 25/99

N89°16'56\"/>

PARTIALLY

MUSCULPIA BE

FRANCO

S. E. 1/4 OF SECTION 17, T. 1 N., R. 4 W.

M. B. 7/23

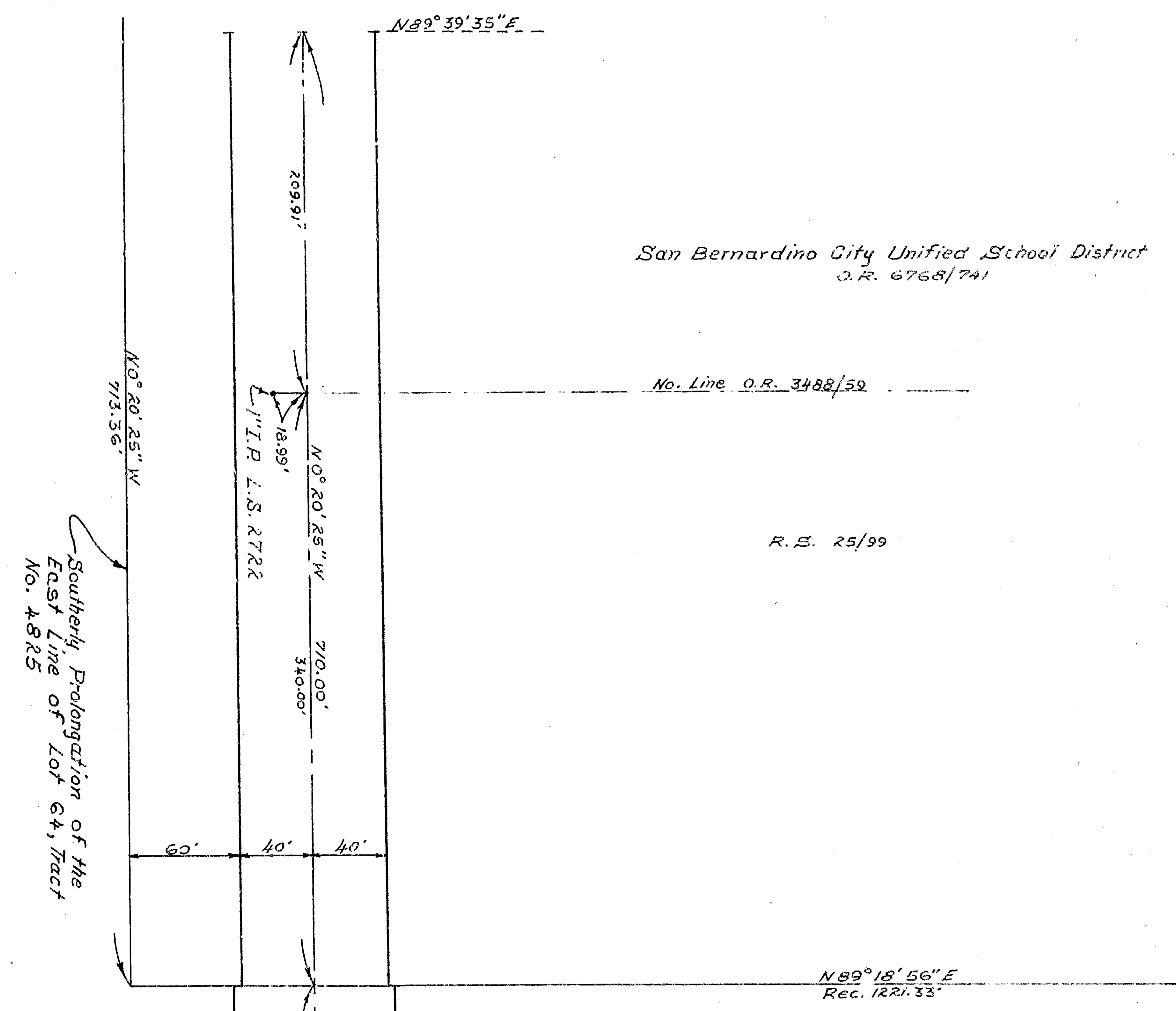
Scale: 1" = 50'

SEE SHEET NO. 5

✓	Changed Alignment	✓	APPROVED	DATE	7	SHEETS
✓	REVISION	✓	APPROVED	DATE	7	SHEETS

DRAWING NO.
3034
SHEET 6 OF 7

SEE SHEET NO. 7



San Bernardino City Unified School District
D.S. 6768/741

No. Line O.R. 3982/59

R.S. 25/99

N89°16'56\"/>

Southerly Prolongation of the
East Line of Lot 64, Tract
No. 4825

PARTIALLY

MUSCULPIA BE

FRANCO

S. E. 1/4 OF SECTION 17, T. 1 N., R. 4 W.

M. B. 7/23

Scale: 1" = 50'

SEE SHEET NO. 5

✓	Changed Alignment	✓	APPROVED	DATE	7/23	DRAWING NO.	3034
✓	REVISION	✓	APPROVED	DATE	7/23	SHEET 6 OF 7 SHEETS	